

## MECH 300 – Assignment 2

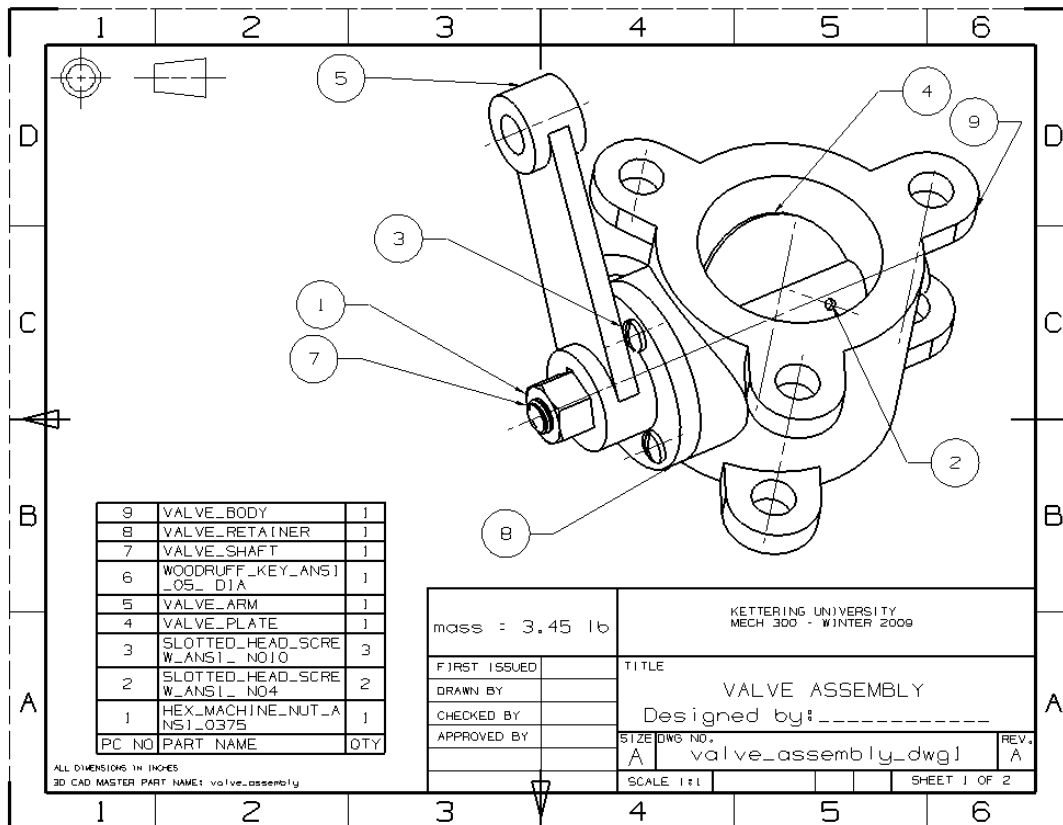
It is recommended to do the following NX5 CAST tutorials:

*Drafting – Introduction to Drafting – Drawings and Views – Dimensions – Assembly Drawings*

Create drawings of your Valve Assembly; separate drawings for each part: shaft, arm, plate, retainer and body. Also create an assembly drawing (isometric view only specifying each component). Parts should be dimensioned fully (but not over-dimensioned!), assembly drawing should display parts list, and indicate parts with autoballoons, as shown in the example below. Determine mass of all your parts and total mass of the assembly (using the NX5 provided default steel as material), and enter these upon your drawings, as shown below (don't forget about the units for mass!)

You can use standard UG NX5 template format, with title block that you will find when you open the drawing new files. Edit texts provided in the templates as shown in the examples here. Plot all of your six drawings (i.e. do not use Print or TIFF snapshots of the screen, but rather the plot function of NX, your view borders should not show on the plot this way). Submit all drawings stapled together.

Sample assembly drawing:



Sample part drawing:

